

GSE Drive and Steer Axles

Product Summary

The Newage range of GSE axles has been specifically developed to withstand the demands of the Ground Support Equipment vehicle market. Our range of axles versatility caters for an increasingly wide range of applications including belt loaders, baggage tractors, freight tow tractors and maintenance lifts. All Newage GSE axles are made of durable cast iron construction without any welded joints. The design of our drive axles incorporate inboard planetary gearing giving multiple ratio options and the use of standard wheel rims.

- Axle load capacities up to 14,300lbs (6,500kg)
- Towed load capability up to 60ton (54tonne)
- Multiple track widths and mounting options
- Hydraulic floating brake calipers
- Fully floating axle shafts
- Triple reduction design ensures lower gears stresses whilst maintaining fuel economy
- Taper roller bearings used for longer life and reduction in noise levels
- Park brakes are optional and can be retro fitted
- Helical gears give greater contact ratio than spur gears and also a reduction in noise levels



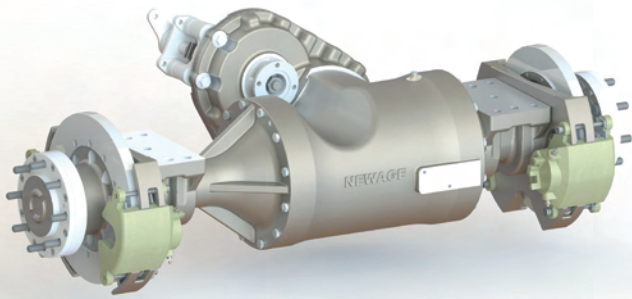
prm-newage.com



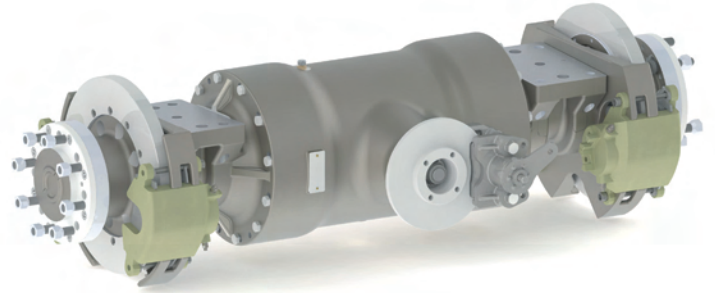
Made in Britain

6,000lbs DBP / (30ton) Baggage Tractor Axles

512 Axle

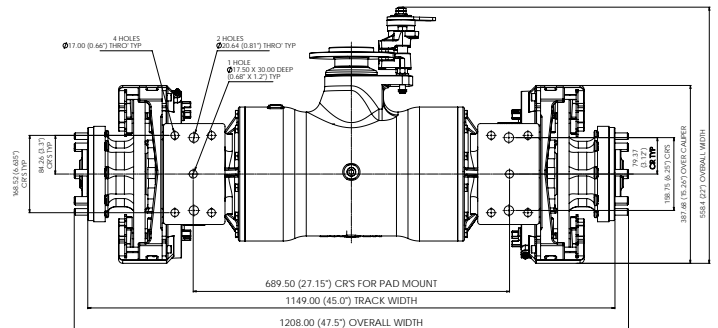
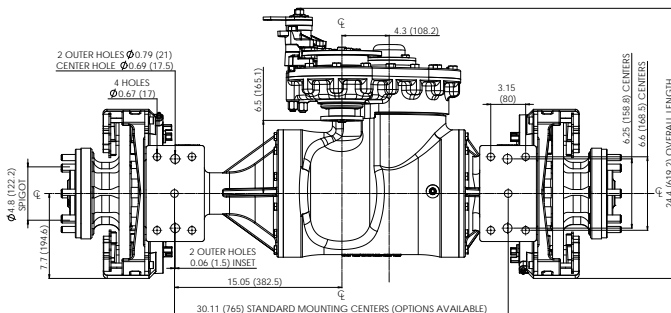
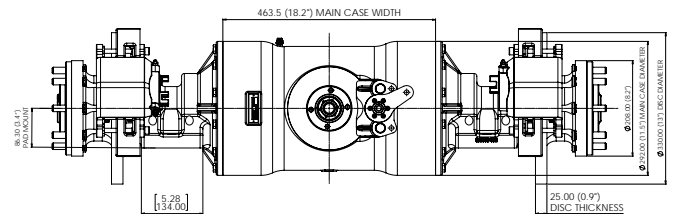
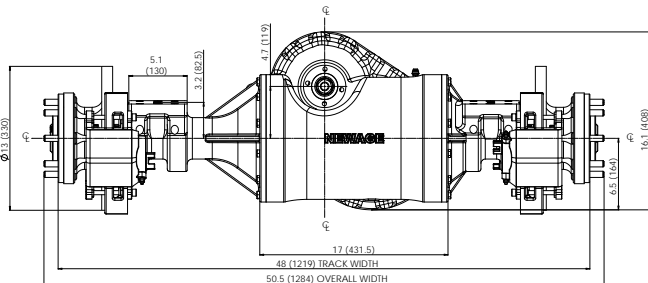


515 Axle



Standard Ratios	9.9	12.3	14.4	15.8	19.9
Nominal Axle Load Rating	6,600lbs (3,000 Kg) based on 48in (1,219mm) wheel track Maximum Towed Load - 30t (27 Tonnes)				
Typical Vehicle Drawbar Pull	6,000lbs (26,700N)				
Brakes	Dual floating calipers with bolt on rotors				
Dry Weight	Approximately 661lbs (300 Kg)				
Park Brake	Optional (disc mounted)				
Wheel Fixings	8 studs: 9/16 x 18 UNF – 3A on 6.5in PCD (165.1mm)				
Standard Mounting Centers	30.11in (765mm) mounting centers, across 6.25in (158.75mm) with 4 x 0.811in (20.6mm) diameter holes (Optional mountings & track widths are available upon request)				
Input Flange	HS1310				

Standard Ratios	9.2	12.3	14.8	15.8
Nominal Axle Load Rating	6,600lbs (3,000 Kg) based on 45in (1,219mm) wheel track Maximum Towed Load - 30t (27 Tonnes)			
Typical Vehicle Drawbar Pull	6,000lbs (26,700N)			
Brakes	Dual floating calipers with bolt on rotors			
Dry Weight	Approximately 550lbs (250 Kg)			
Park Brake	Optional (disc mounted)			
Wheel Fixings	8 studs: 9/16 x 18 UNF – 3A on 6.5in PCD (165.1 mm)			
Standard Mounting Centers	27.1in (689mm) mounting centers, across 6.25in (158.75mm) with 2 x 0.811in (20.6mm) diameter holes (Optional mountings & track widths are available upon request)			
Input Flange	HS1310			

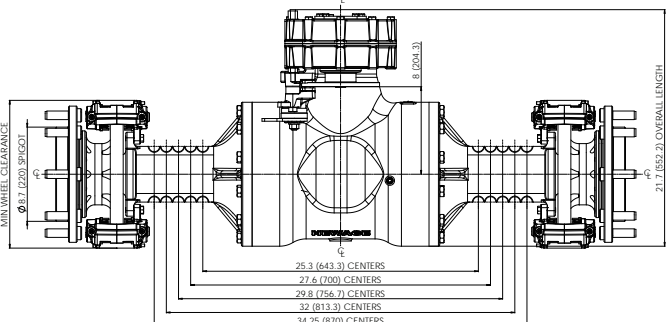
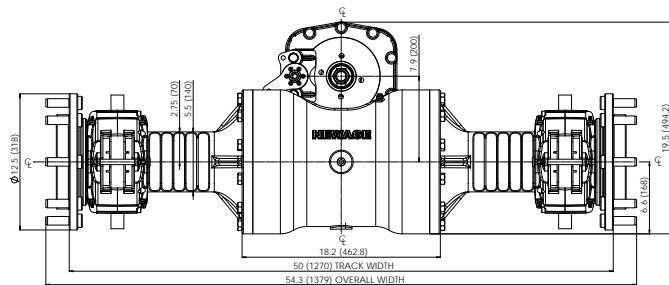


14,000lbs DBP / (60ton) Freight Tractor Axles

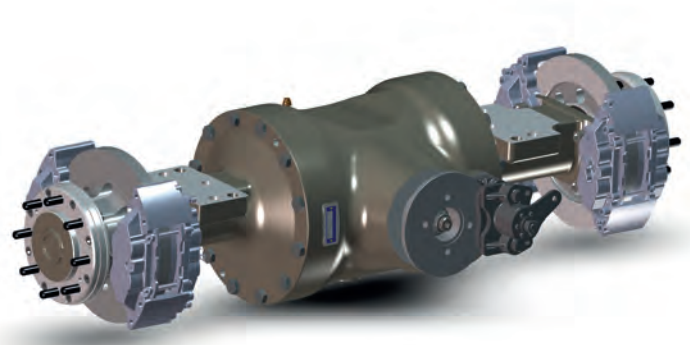
613 Axle



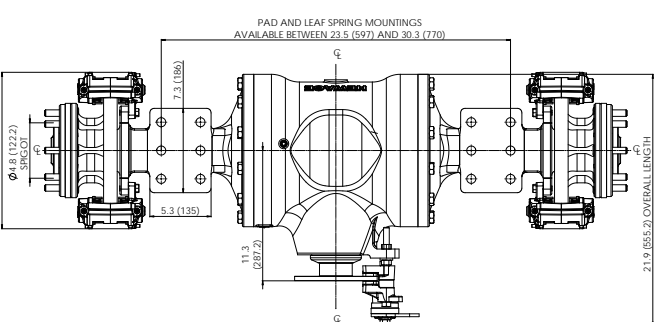
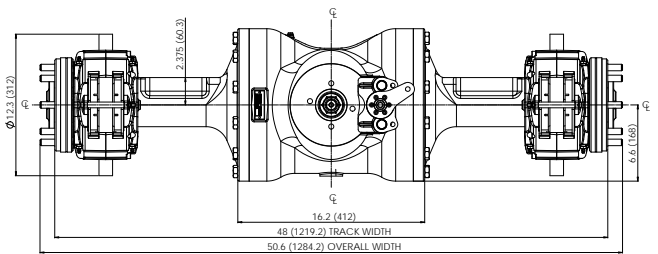
Standard Ratios	10.1	13.2	15.8	19.7
Nominal Axle Load Rating	12,100lbs (5,500Kg) based on 50in (1270mm) wheel track Maximum Towed Load - 60t (54 Tonnes)			
Typical Vehicle Drawbar Pull	12,000lbs (53,400N)			
Brakes	Dual caliper 4 piston hydraulic disc brakes			
Dry Weight	Approximately 880lbs (400Kg)			
Park Brake	Optional (disc mounted)			
Wheel Fixings	8 studs: M20x1.5 on 10.83in (275mm) PCD or 8 studs: 9/16 x 18 UNF - 3A on 6.5 in PCD (165.1mm)			
Standard Mounting Centers	Between 25.3in (643mm) and 34.25in (870mm)			
Input Flange	HS1410			



612 Axle



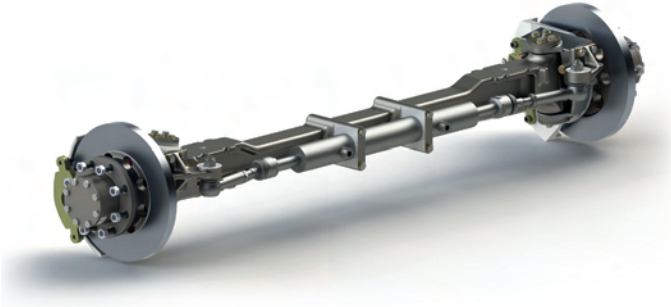
Standard Ratios	13.2	15.8	19.7
Nominal Axle Load Rating	14,300 lbs (6,486 Kg) based on 48in (1219mm) wheel track Maximum Towed Load - 60t (54 Tonnes)		
Typical Vehicle Drawbar Pull	14,000lbs (62,275N)		
Brakes	Dual caliper 4 piston hydraulic disc brakes		
Dry Weight	Approximately 727lbs (330Kg)		
Park Brake	Optional (disc mounted)		
Wheel Fixings	8 studs: M20x1.5 on 10.83in (275mm) PCD or 8 studs: 9/16 x 18 UNF - 3A on 6.5 in PCD (165.1mm)		
Standard Mounting Centers	Between 23.5in (597mm) and 30.3in (770mm)		
Input Flange	HS1410		



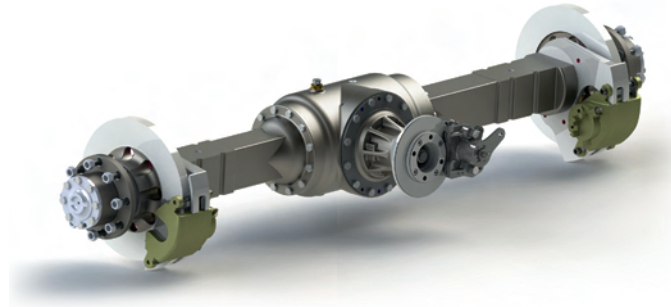
Variety of installation angles available

Beltloader Drive and Steer Axles

216S Dead Steer Axle



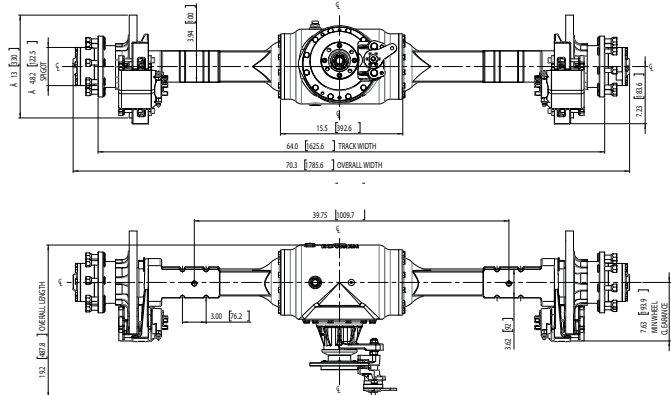
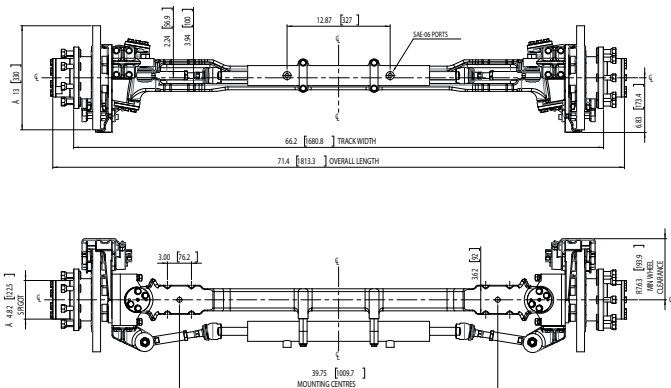
216B Drive Axle



Max Steer Angle	28 degrees
Nominal Axle Load Rating	6,400 lbs (2,900 Kg) based on 66.2in (1681.5mm) wheel track
Brakes	Single floating calipers with bolt on rotors
Dry Weight	349lbs (158Kg)
Park Brake	Optional (disc mounted)
Wheel Fixings	8 studs: 9/16x18 UNF - 3A on 6.5 in PCD (165.1mm)
Standard Mounting Centers	39.75in (1009.65mm) mounting centers & across 3.625in (92.1mm) x 3in (76.2mm) axial recess centers with diameter of 0.590in (15mm) for 'U' bolt mountings
Special Features	Durable solid cast iron constructed 'I' beam with integrated dual action steer cylinder Durable solid cast iron steer knuckle Non king pin design using taper roller bearing trunnions Maintenance free tie rods

Standard Ratios 14.7

Nominal Axle Load Rating	7,000 lbs (3,200 Kg) based on 64in (1625.6mm) wheel track
Brakes	Single floating calipers with bolt on rotors
Dry Weight	397lbs (180Kg)
Park Brake	Optional (disc mounted)
Wheel Fixings	8 studs: 9/16x18 UNF - 3A on 6.5 in PCD (165.1mm)
Standard Mounting Centers	39.75in (1009.65mm) mounting centers & across 3.625in (92.1mm) x 3in (76.2mm) axial recess centers with diameter of 0.590in (15mm) for 'U' bolt mountings
Input Flange	HS1410
Differential	Limited Slip Differential (Optional open differential)



Variety of installation angles available

NEWAGE



MADE IN ENGLAND

PRM Newage Ltd. is the business name of Newage.
Barlow Road, Coventry, CV2 2LD, England
Tel: +44 24 7661 7141
Email: mail@prm-newage.com
Web: www.prm-newage.com

